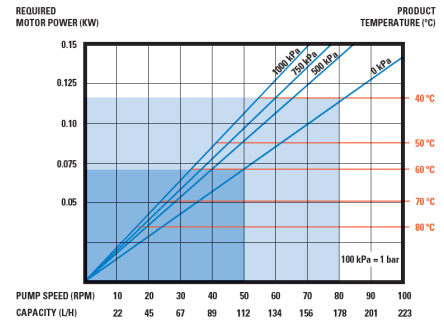


MAIN FEATURES AND BENEFITS:

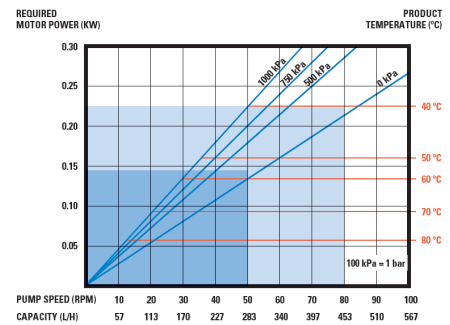
- High quality hose with unique manufacturing process. Extruded inner layer, high-density textile reinforcement and precision machined outer layer that ensures optimal compression and rapid installation thanks to control of the tolerance. Available in materials compatible with all types of product and working conditions. Excellent performance against abrasion, temperature and corrosion.
- Fast and simple assembly, commissioning and maintenance. Pump design with innovative assembly that facilitates hose replacement. Maintenance-free pump with lubricated-for-life system and low lubricant level. Minimal waste generated.
- Integrated oversized bearings to withstand the axial loads, large metal rollers with oversized bearings, secure and reliable connection system and very robust construction materials. Ideal pump for continuous work applications.
- Excellent compression of the hose with no friction and unmatched efficiency. Low energy consumption and better hose life due to XXL rollers. Ease of operation with a minimal starting torque and a very wide frequency range.

TMVT I12 | I17 | I21

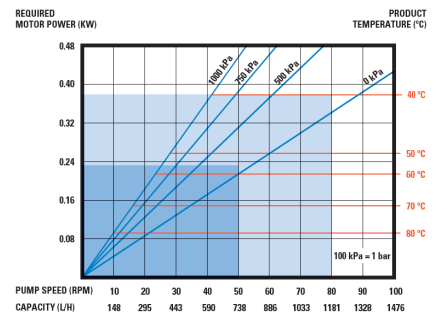
TECHNICAL SPECIFICATIONS	MODEL I12
Max. Flow (continuous)	180 l/h
Capacity	0,037 l/rev
Max. Discharge Pressure	10 bar
Max. Temperature	80 °c
Inner Diameter	13 mm.
Hose material	NR, EPDM and NBR (Food Grade)
Connections	AISI-316, PP, PVDF (PTFE)
Pump casing material	Cast Iron (Powder Coated)



TECHNICAL SPECIFICATIONS	MODEL I17
Max. Flow (continuous)	450 l/h
Capacity	0,094 l/rev
Max. Discharge Pressure	10 bar
Max. Temperature	80 °C
Inner Diameter	16 mm.
Hose material	NR, EPDM and NBR (Food Grade)
Connections	AISI-316, PP, PVDF (PTFE)
Pump casing material	Cast Iron (Powder Coated)

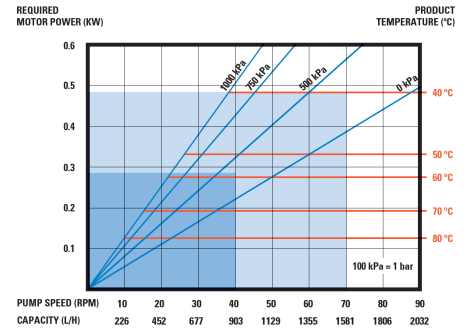


TECHNICAL SPECIFICATIONS	MODEL I21
Max. Flow (continuous)	1200 l/h
Capacity	0,246 l/rev
Max. Discharge Pressure	10 bar
Max. Temperature	80 °C
Inner Diameter	22 mm.
Hose material	NR, EPDM and NBR (Food Grade)
Connections	AISI-316, PP, PVDF (PTFE)
Pump casing material	Cast Iron (Powder Coated)

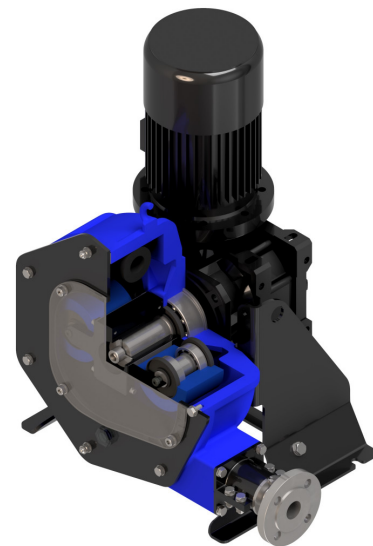
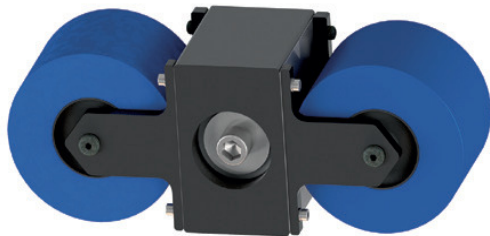
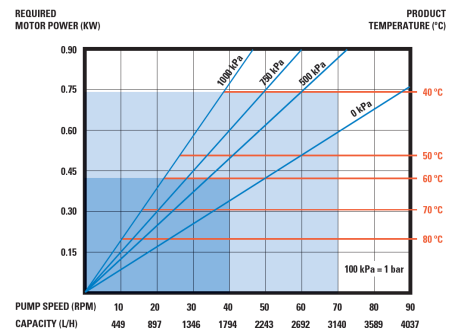


TMVT I28 | I35

TECHNICAL SPECIFICATIONS	MODEL I28
Max. Flow (continuous)	1600 l/h
Capacity	0,376 l/rev
Max. Discharge Pressure	10 bar
Max. Temperature	80 °C
Inner Diameter	28 mm.
Hose material	NR, EPDM and NBR (Food Grade)
Connections	AISI-316, PP, PVDF (PTFE)
Pump casing material	Cast Iron (Powder Coated)

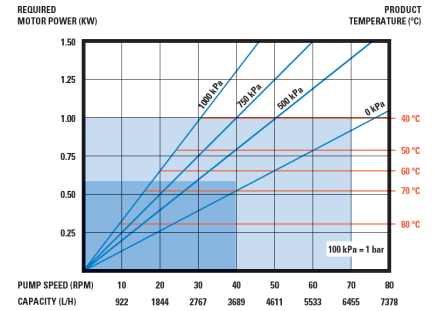


TECHNICAL SPECIFICATIONS	MODEL I35
Max. Flow (continuous)	3200 l/h
Capacity	0,748 l/rev
Max. Discharge Pressure	10 bar
Max. Temperature	80 °C
Inner Diameter	35 mm.
Hose material	NR, EPDM and NBR (Food Grade)
Connections	AISI-316, PP, PVDF (PTFE)
Pump casing material	Cast Iron (Powder Coated)



TMVT I43 | I55

TECHNICAL SPECIFICATIONS	MODEL I43
Max. Flow (continuous)	6500 l/h
Capacity	1,537 l/rev
Max. Discharge Pressure	10 bar
Max. Temperature	80 °C
Inner Diameter	43 mm.
Hose material	NR, EPDM and NBR (Food Grade)
Connections	AISI-316, PP, PVDF (PTFE)
Pump casing material	Cast Iron (Powder Coated)



TECHNICAL SPECIFICATIONS	MODEL I55
Max. Flow (continuous)	13000 l/h
Capacity	3,533 l/rev
Max. Discharge Pressure	10 bar
Max. Temperature	80 °C
Inner Diameter	55 mm.
Hose material	NR, EPDM and NBR (Food Grade)
Connections	AISI-316, PP, PVDF (PTFE)
Pump casing material	Cast Iron (Powder Coated)

